

# Selected Tables Tab

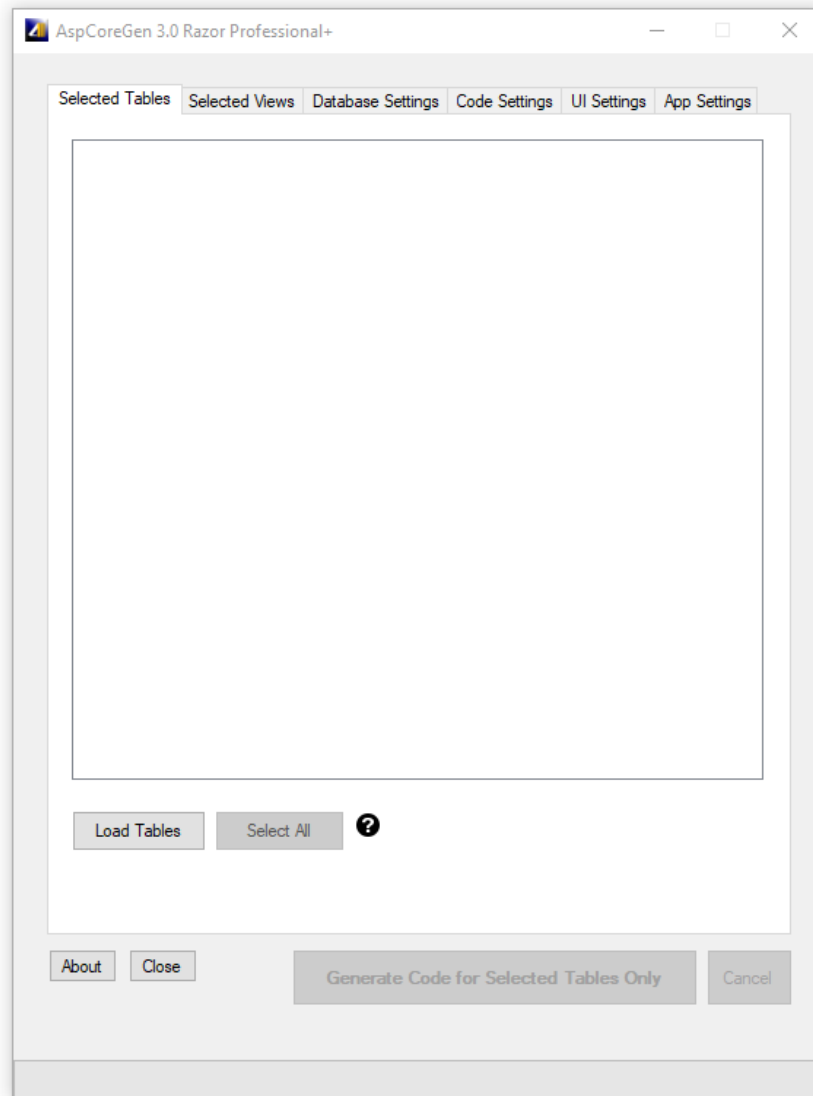
## 1 CONTENTS

---

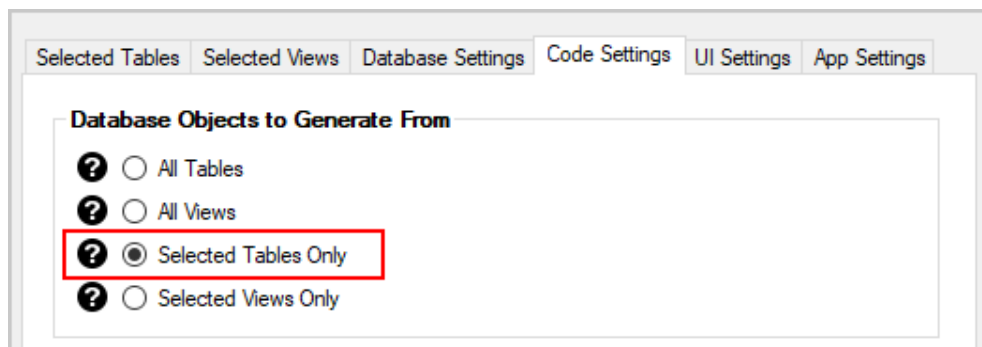
1	Load Tables .....	3
2	Select ALL.....	4
3	Selecting Database Tables for Code Generation .....	5

# Selected Tables Tab

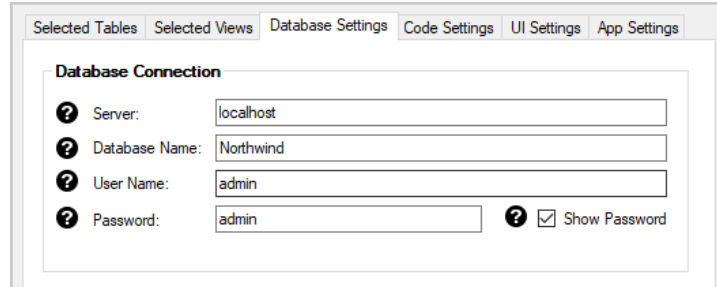
The Selected Tables Tab is where we choose database tables from where we want to generate code from.



The option *Selected Tables Only* under the *Database Objects to Generate From* must be selected from the *Code Settings Tab* for any operation to take place in this tab.



Also, all the required fields must be filled, most importantly the Database Connection fields.

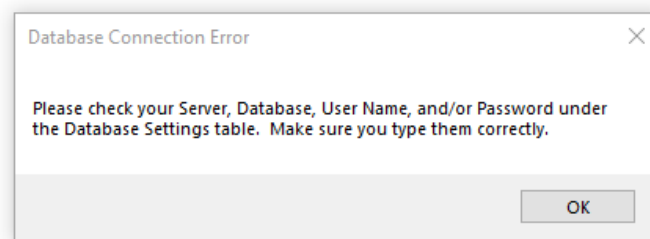


The screenshot shows a software interface with several tabs: "Selected Tables", "Selected Views", "Database Settings", "Code Settings", "UI Settings", and "App Settings". The "Database Settings" tab is active, displaying a "Database Connection" section. This section contains four input fields, each with a question mark icon to its left: "Server:" with the value "localhost", "Database Name:" with "Northwind", "User Name:" with "admin", and "Password:" with "admin". To the right of the password field is a checkbox labeled "Show Password" which is checked.

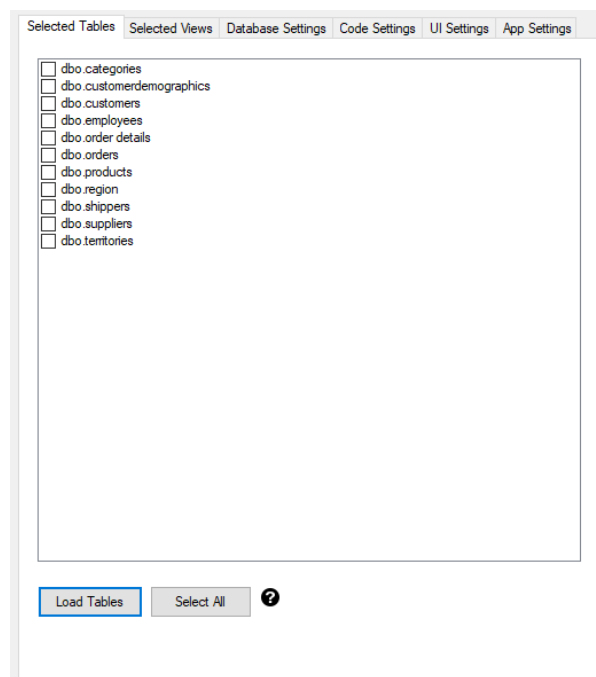
## 1 LOAD TABLES

---

The *Load Tables Button* will load all the database tables for the database that you referenced in the *Database Connection* under the *Database Settings Tab*. When you enter any invalid information in the *Database Connection* fields, an error message will pop-up as soon as you *Click the Load Tables Button*.



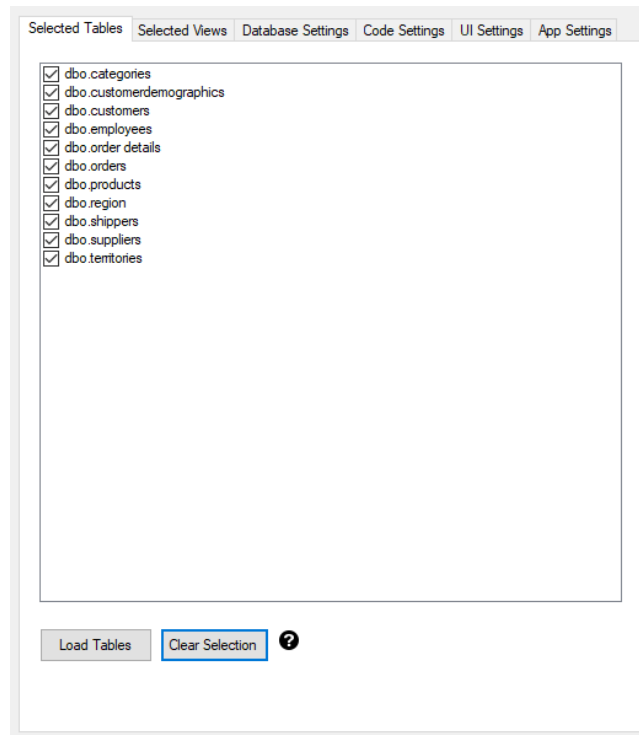
Otherwise, all the database tables for the *Northwind* (our example) database will be loaded.



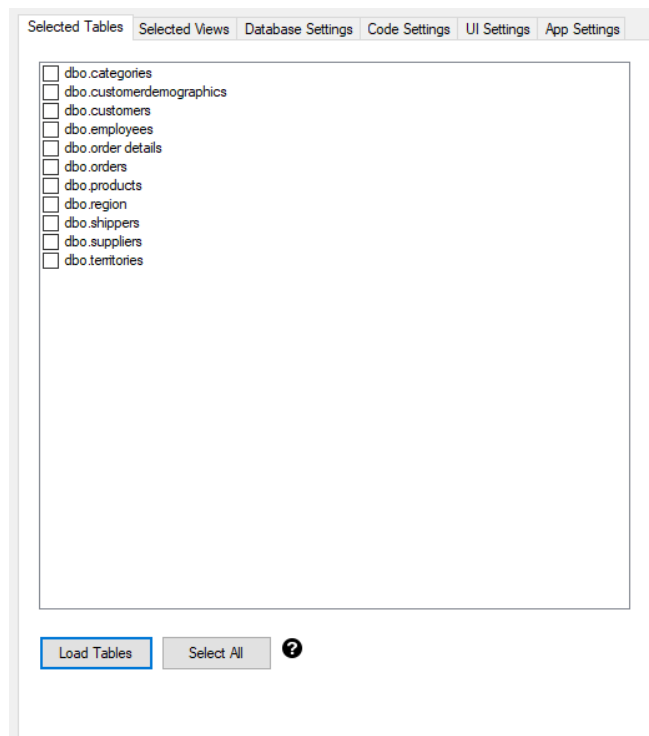
The screenshot shows the same software interface as before, but now the "Database Settings" tab displays a list of database tables. Each table name is preceded by an unchecked checkbox. The list includes: "dbo.categories", "dbo.customerdemographics", "dbo.customers", "dbo.employees", "dbo.order details", "dbo.orders", "dbo.products", "dbo.region", "dbo.shippers", "dbo.suppliers", and "dbo.territories". At the bottom of the window, there are two buttons: "Load Tables" (highlighted in blue) and "Select All", followed by a question mark icon.

## 2 SELECT ALL

The *Select All Button* will check (select) all the database tables on the list. It will also change the *Select All Button's* label to *Clear Selection*.



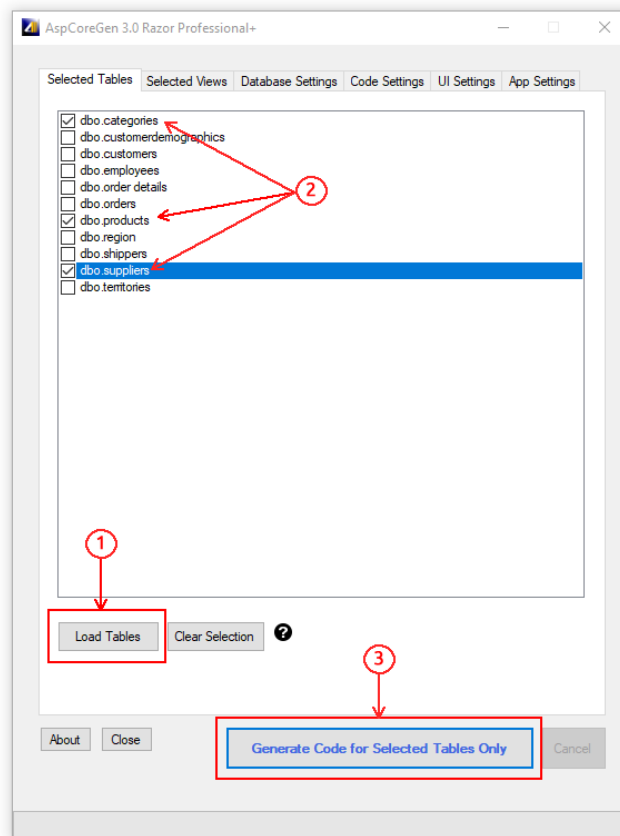
Clicking the *Clear Selection Button* will clear (uncheck) all the selected database tables. It will also toggle back the button's label to *Select All*.



### 3 SELECTING DATABASE TABLES FOR CODE GENERATION

This is not in the *Selected Tables Tab*.

1. Click the *Load Tables* button.
2. Select the database tables you want to generate code from.
3. Click the *Generate Code for Selected Tables Only* button.



You can read end-to-end tutorials on more subjects on using AspCoreGen 3.0 Razor Professional Plus that came with your purchase. These tutorials are available to customers and are included in a link on your invoice when you purchase AspCoreGen 3.0 Razor Professional.

**Note:** Some features shown here are not available in the Express Edition.

End of tutorial.