

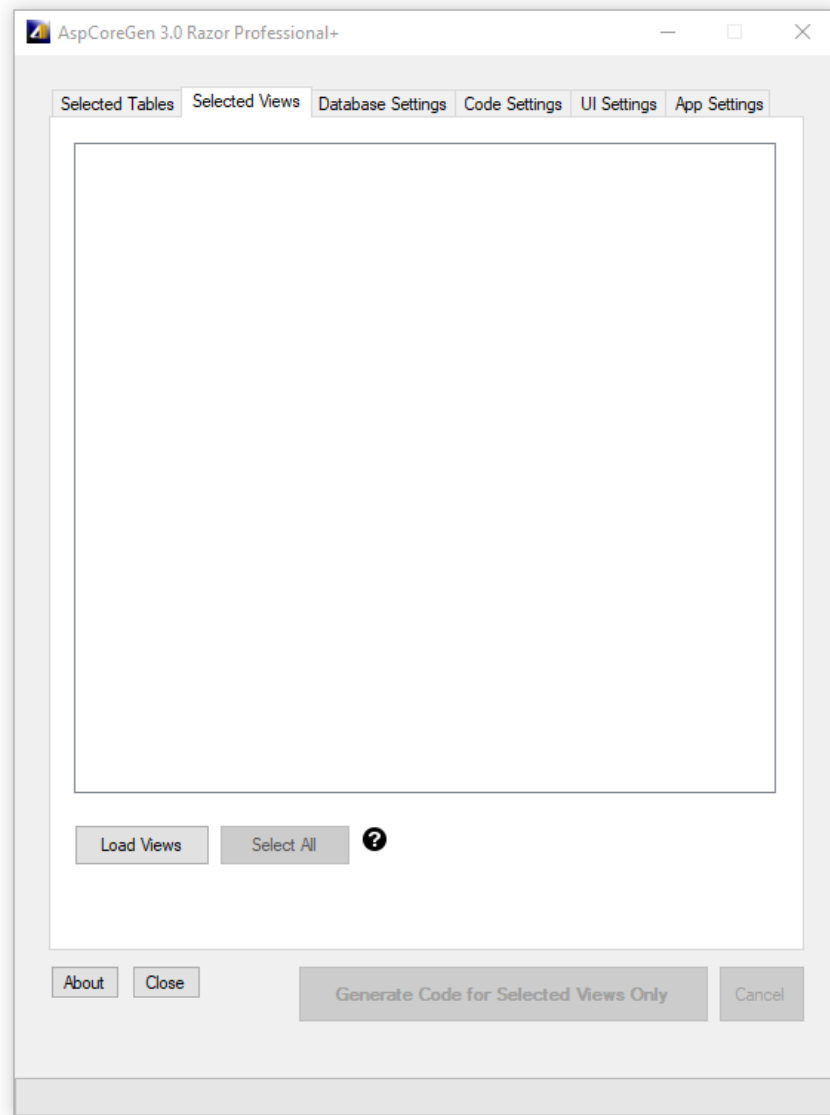
Selected Views Tab

1 CONTENTS

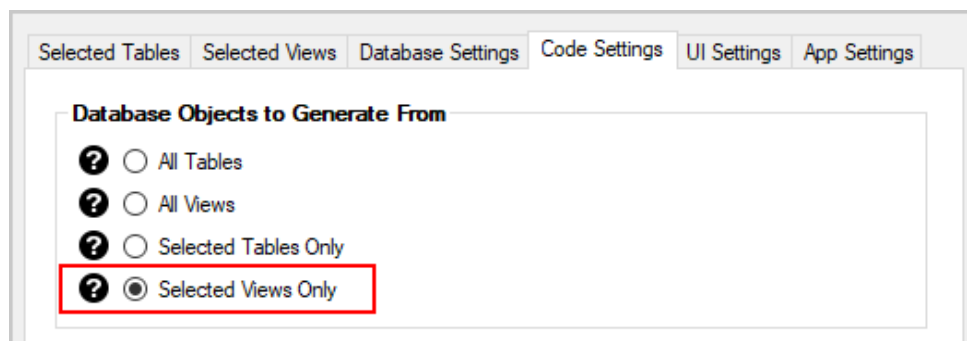
| | | |
|---|--|---|
| 1 | Load Views | 4 |
| 2 | Select ALL..... | 5 |
| 3 | Selecting Database Views for Code Generation | 6 |

Selected Views Tab

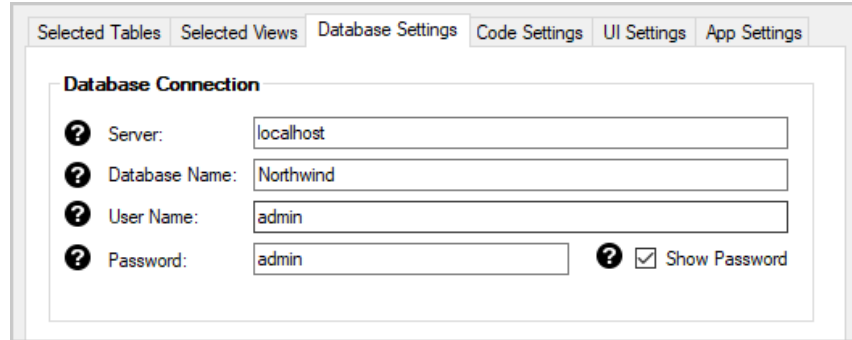
The Selected Views Tab is where we choose database views from where we want to generate code from.



The option *Selected Views Only* under the *Database Objects to Generate From* must be selected from the *Code Settings Tab* for any operation to take place in this tab.

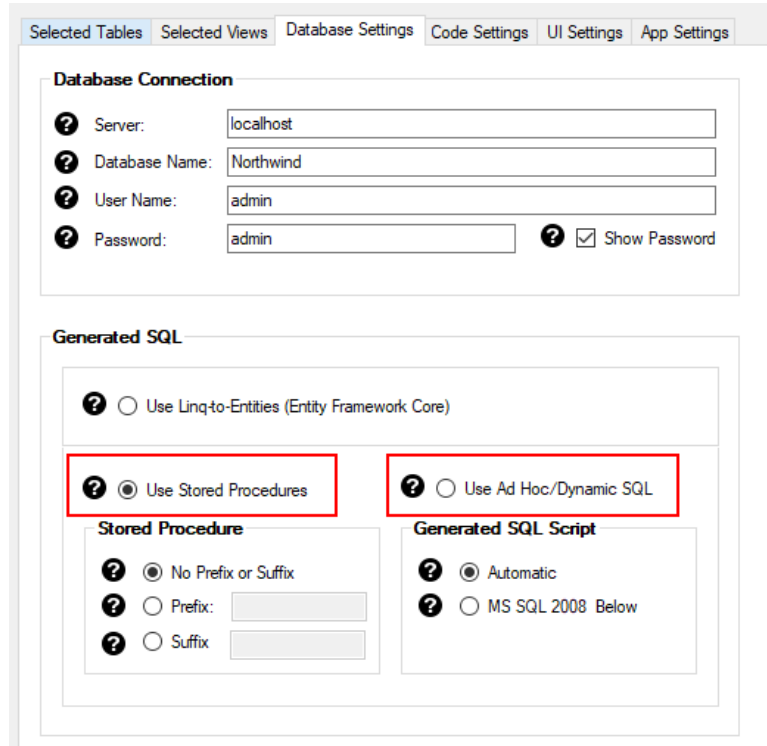


Also, all the required fields must be filled, most importantly the *Database Connection* fields.



The screenshot shows the 'Database Connection' tab in a settings window. The window has a tabbed interface with 'Selected Tables', 'Selected Views', 'Database Settings', 'Code Settings', 'UI Settings', and 'App Settings'. The 'Database Connection' section contains four input fields, each with a question mark icon: 'Server' (localhost), 'Database Name' (Northwind), 'User Name' (admin), and 'Password' (admin). There is also a 'Show Password' checkbox which is checked.

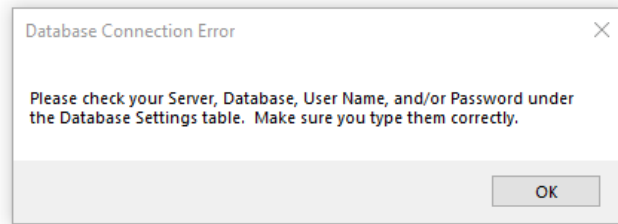
Under the *Generated SQL*, in the *Database Settings Tab*, the only options you can choose to be able to select *Selected Views* is either *Use Stored Procedure* or *Use Ad Hoc/Dynamic SQL*.



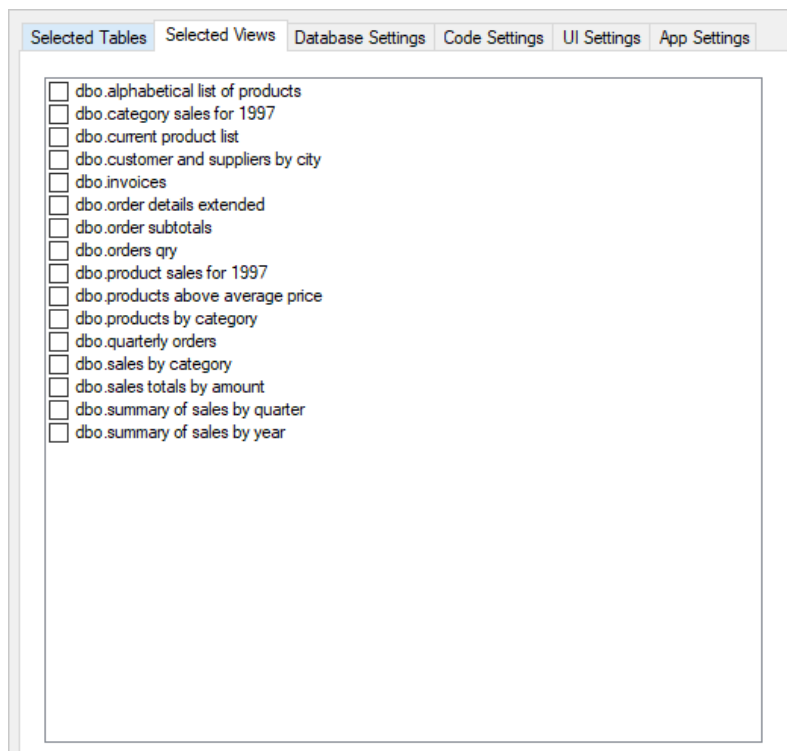
The screenshot shows the 'Generated SQL' section of the 'Database Settings' tab. It features a radio button for 'Use Linq-to-Entities (Entity Framework Core)'. Below it are two radio buttons: 'Use Stored Procedures' (selected) and 'Use Ad Hoc/Dynamic SQL'. The 'Use Stored Procedures' option is highlighted with a red box. Under 'Use Stored Procedures', there are three options: 'No Prefix or Suffix' (selected), 'Prefix', and 'Suffix'. The 'Use Ad Hoc/Dynamic SQL' option is also highlighted with a red box. Under 'Use Ad Hoc/Dynamic SQL', there are two options: 'Automatic' (selected) and 'MS SQL 2008 Below'.

1 LOAD VIEWS

The *Load Views Button* will load all the database views for the database that you referenced in the *Database Connection* under the *Database Settings Tab*. When you enter any invalid information in the *Database Connection* fields, an error message will pop-up as soon as you *Click* the *Load Views Button*.

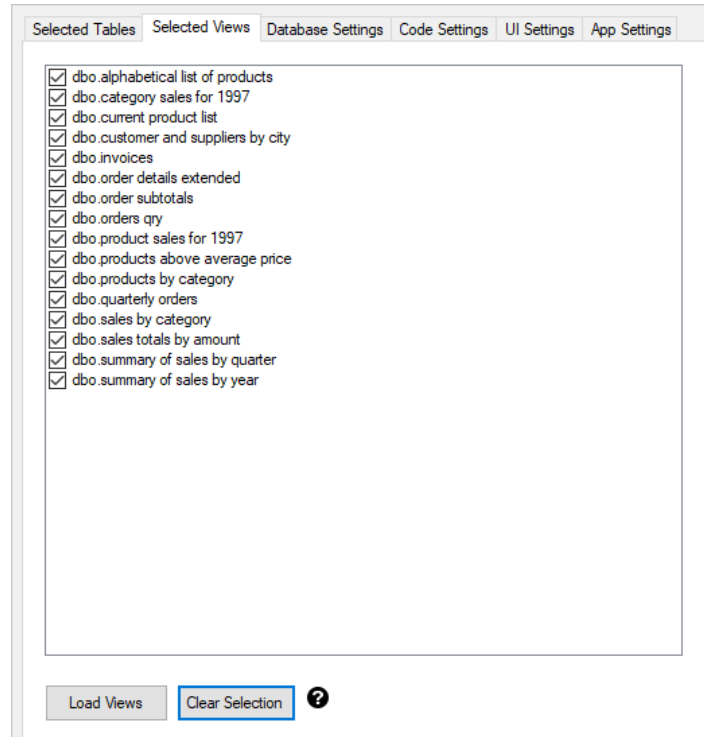


Otherwise, all the database views for the *Northwind* (our example) database will be loaded.

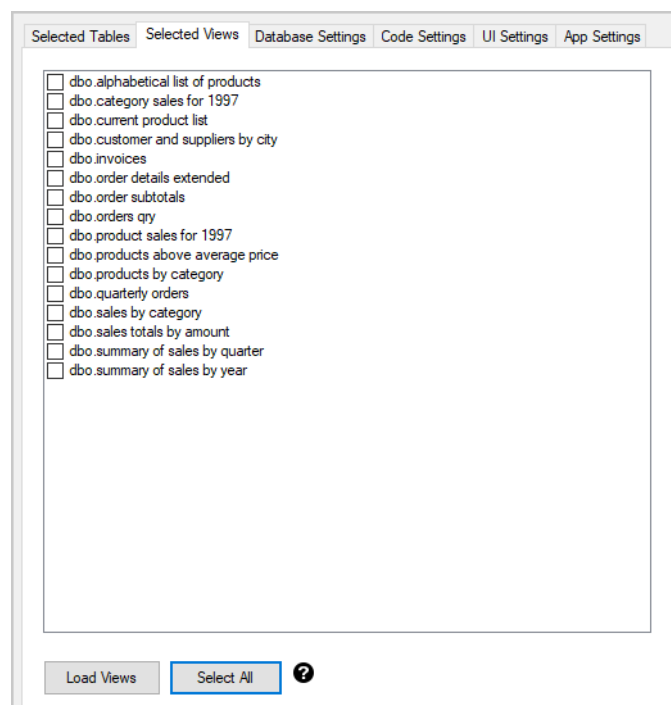


2 SELECT ALL

The *Select All Button* will check (select) all the database views on the list. It will also change the *Select All Button's* label to *Clear Selection*.



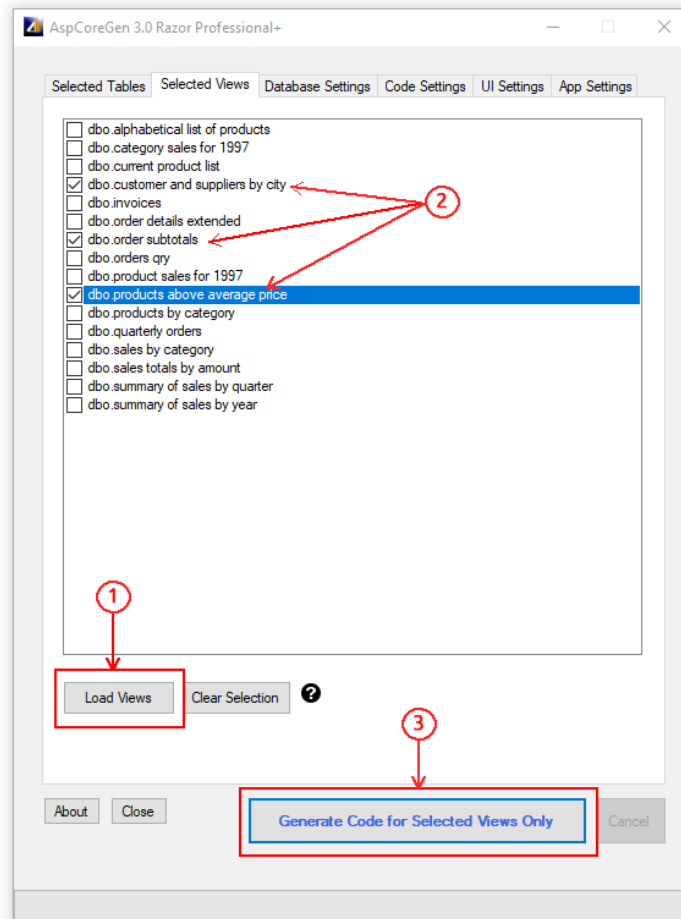
Clicking the *Clear Selection Button* will clear (uncheck) all the selected database views. It will also toggle back the button's label to *Select All*.



3 SELECTING DATABASE VIEWS FOR CODE GENERATION

This is not in the *Selected Views Tab*.

1. Click the *Load Views* button.
2. Select the database views you want to generate code from.
3. Click the *Generate Code for Selected Views Only* button.



You can read end-to-end tutorials on more subjects on using AspCoreGen 3.0 Razor Professional Plus that came with your purchase. These tutorials are available to customers and are included in a link on your invoice when you purchase AspCoreGen 3.0 Razor Professional.

Note: Some features shown here are not available in the Express Edition.

End of tutorial.