

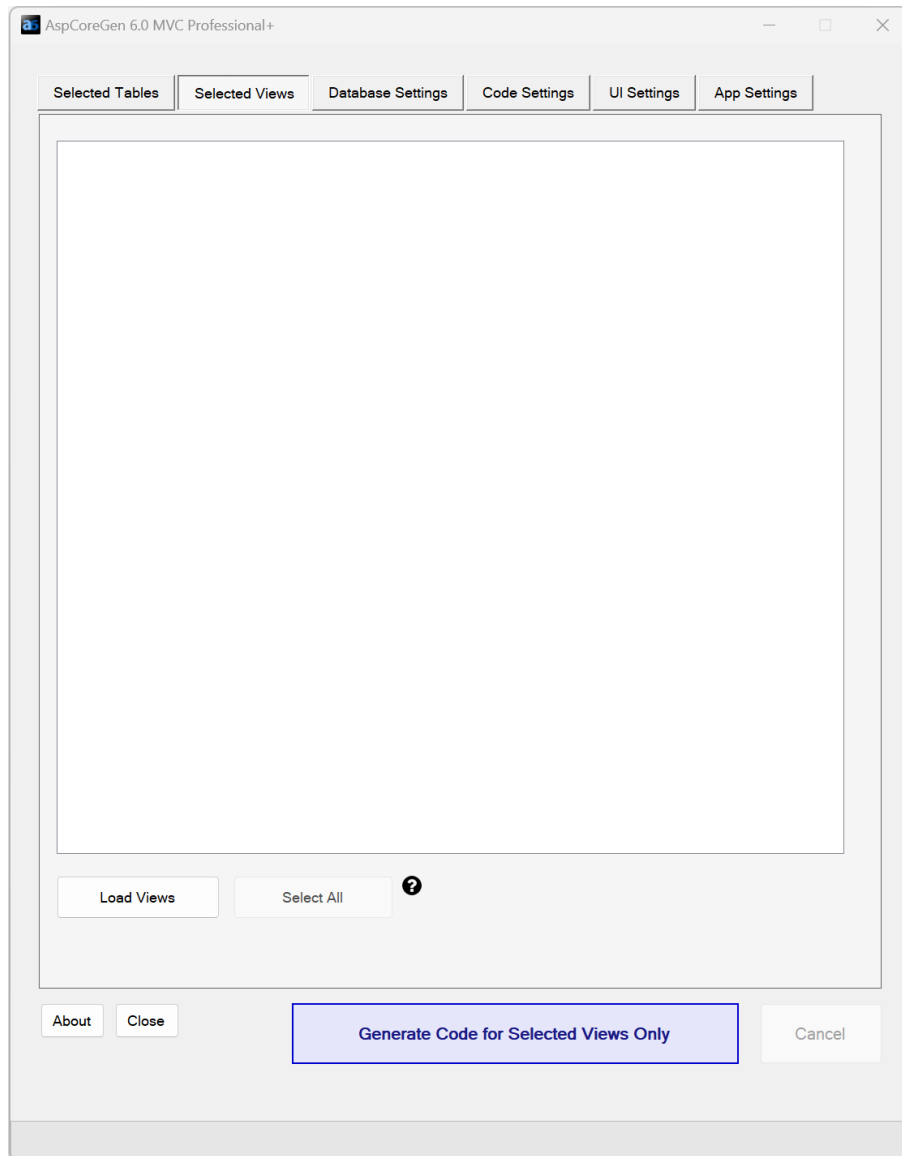
Selected Views Tab

1 CONTENTS

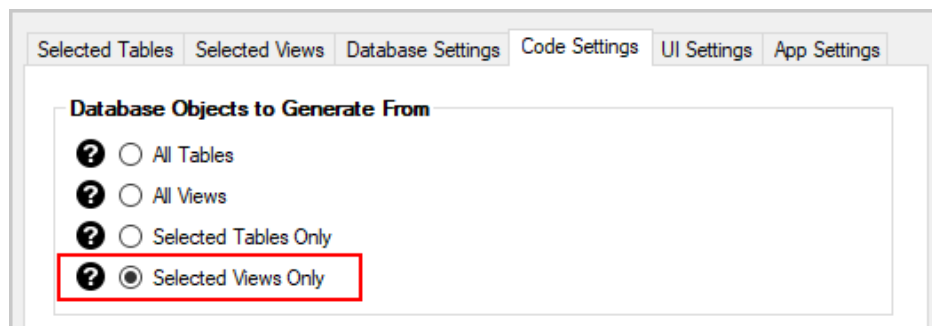
1	Load Views	4
2	Select ALL.....	5
3	Selecting Database Views for Code Generation.....	6

Selected Views Tab

The Selected Views Tab is where we choose database views from where we want to generate code from.



The option *Selected Views Only* under the *Database Objects to Generate From* must be selected from the *Code Settings Tab* for any operation to take place in this tab.



Also, all the required fields must be filled, most importantly the *Database Connection* fields.

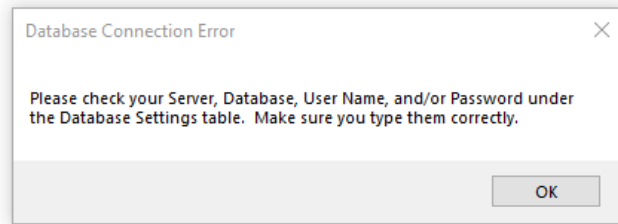
The screenshot shows the 'Database Connection' tab within a settings window. The window has tabs for 'Selected Tables', 'Selected Views', 'Database Settings', 'Code Settings', 'UI Settings', and 'App Settings'. The 'Database Connection' section contains four input fields, each with a help icon (question mark): 'Server' (localhost), 'Database Name' (Northwind), 'User Name' (admin), and 'Password' (admin). There is also a checkbox labeled 'Show Password' which is checked.

Under the *Generated SQL*, in the *Database Settings Tab*, the only options you can choose to be able to select *Selected Views* is either *Use Stored Procedure* or *Use Ad Hoc/Dynamic SQL*.

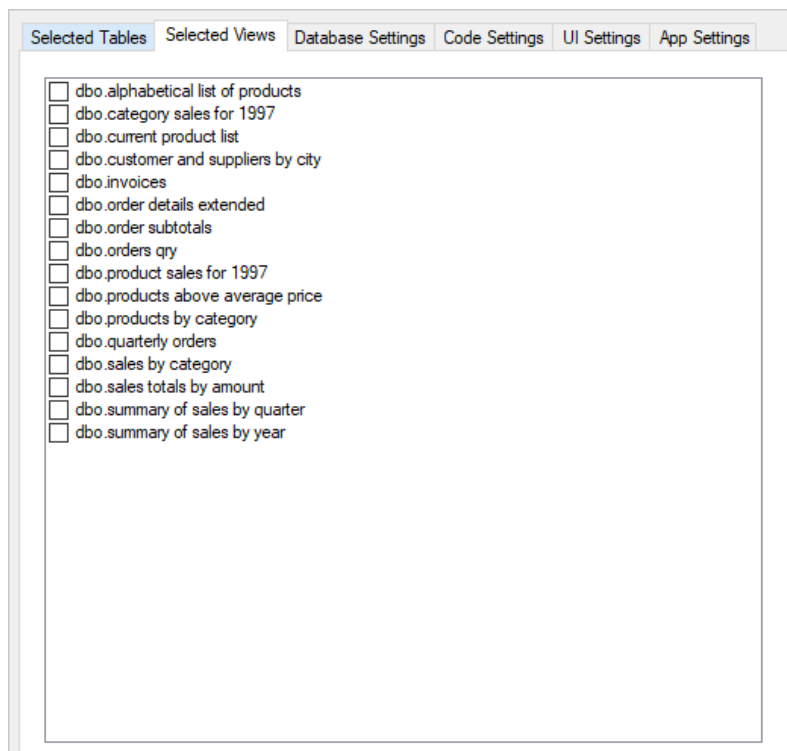
This screenshot shows the 'Generated SQL' section of the 'Database Settings' tab. It includes the same 'Database Connection' fields as the previous image. Below this, there are three radio button options: 'Use Linq-to-Entities (Entity Framework Core)', 'Use Stored Procedures', and 'Use Ad Hoc/Dynamic SQL'. The 'Use Stored Procedures' and 'Use Ad Hoc/Dynamic SQL' options are highlighted with red boxes. Under 'Use Stored Procedures', there are three sub-options: 'No Prefix or Suffix' (selected), 'Prefix', and 'Suffix'. Under 'Use Ad Hoc/Dynamic SQL', there are two sub-options: 'Automatic' (selected) and 'MS SQL 2008 Below'.

1 LOAD VIEWS

The *Load Views Button* will load all the database views for the database that you referenced in the *Database Connection* under the *Database Settings Tab*. When you enter any invalid information in the *Database Connection* fields, an error message will pop-up as soon as you *Click* the *Load Views Button*.

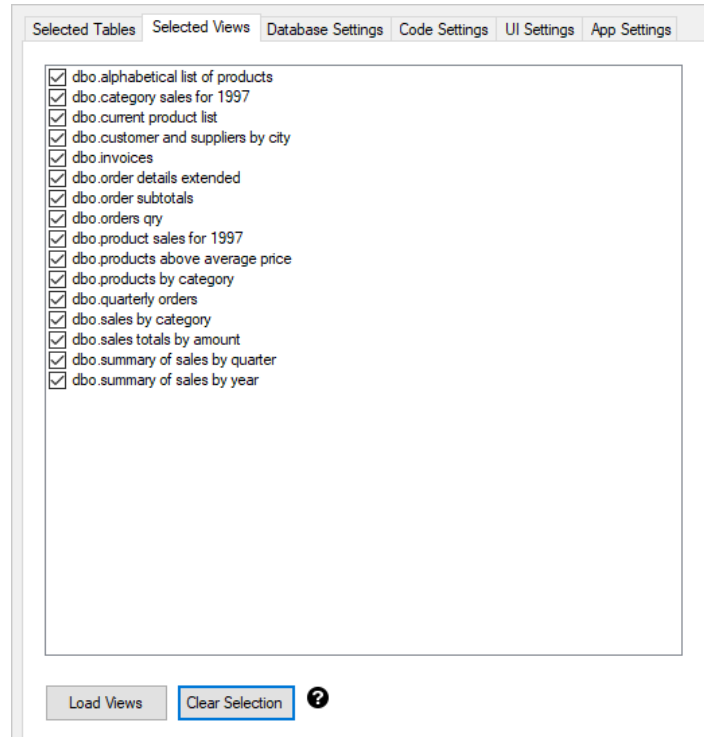


Otherwise, all the database views for the *Northwind* (our example) database will be loaded.

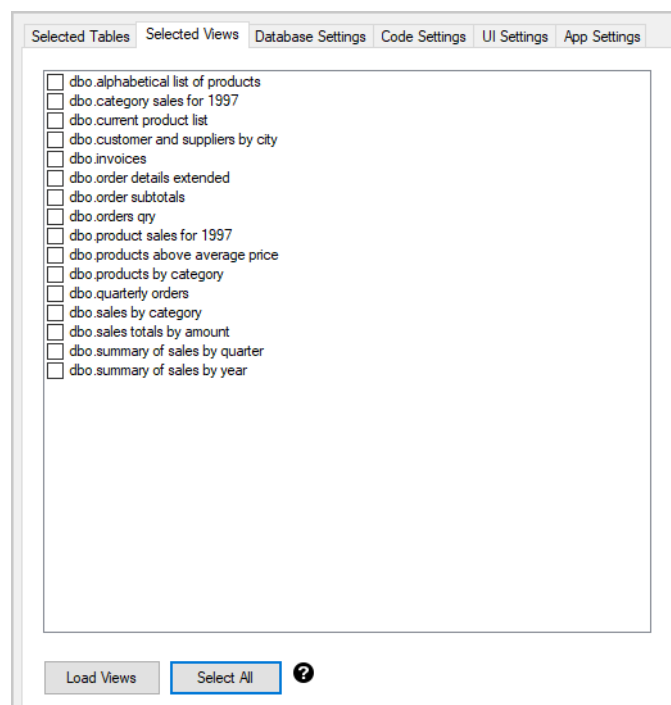


2 SELECT ALL

The *Select All Button* will check (select) all the database views on the list. It will also change the *Select All Button's* label to *Clear Selection*.



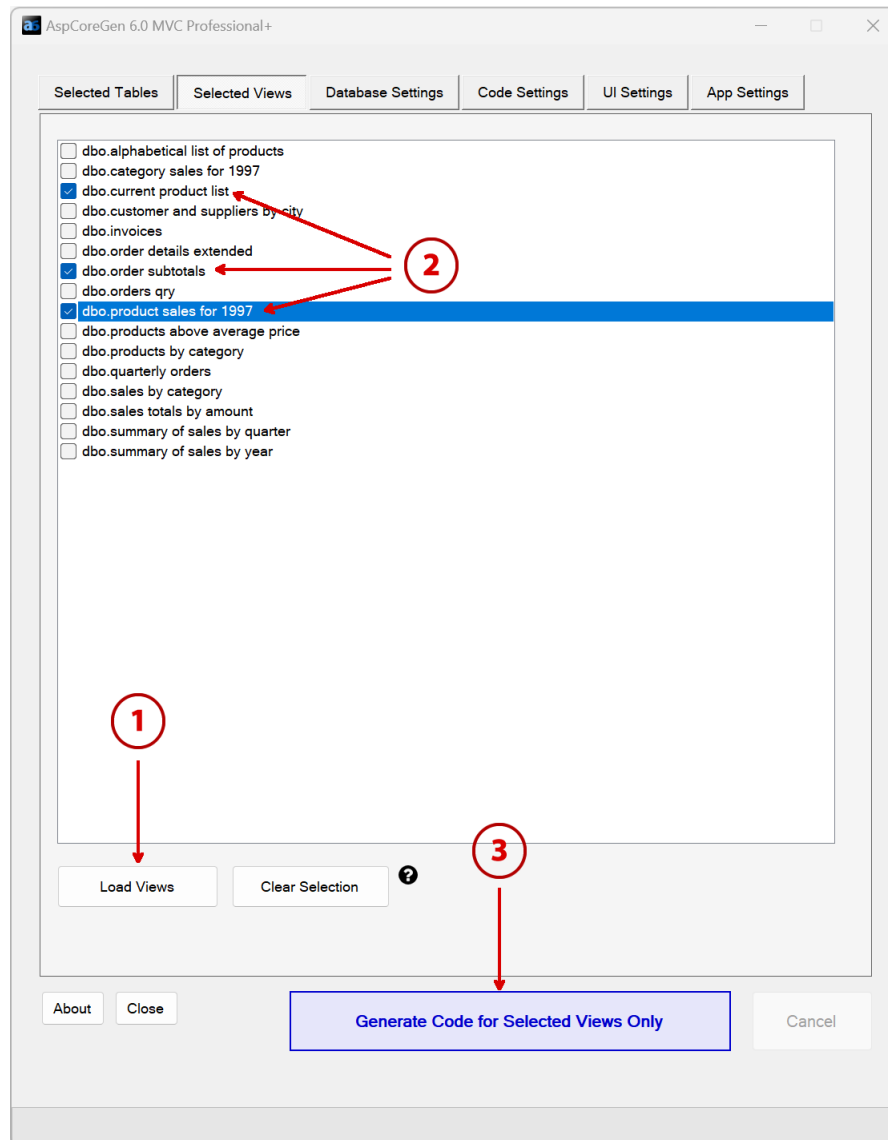
Clicking the *Clear Selection Button* will clear (uncheck) all the selected database views. It will also toggle back the button's label to *Select All*.



3 SELECTING DATABASE VIEWS FOR CODE GENERATION

This is not in the *Selected Views Tab*.

1. Click the *Load Views* button.
2. Select the database views you want to generate code from.
3. Click the *Generate Code for Selected Views Only* button.



You can read end-to-end tutorials on more subjects on using AspCoreGen 6.0 MVC Professional Plus that came with your purchase. These tutorials are available to customers and are included in a link on your invoice when you purchase AspCoreGen 6.0 MVC Professional.

Note: Some features shown here are not available in the Express Edition.

End of tutorial.